

OKLAHOMA DEPARTMENT OF TRANSPORTATION					
FED. ROAD DIST. NO.	STATE	PROJ. NO.	FISCAL YEAR	SHEET NO.	TOTAL SHEETS
6	OKLA.				
DESCRIPTION		REVISIONS		DATE	

C-16-1115, S/4 CORNER OF SECTION 24, T1S, R12W, I.M., COMANCHE COUNTY, OK. FOUND #4 REBAR 12 INCHES DEEP IN PLACE PER CCR FILED BY PLS 1285. SET #6 REBAR ON TOP AND FILED NEW CCR.

C-16-1111, SW CORNER OF SECTION 24, T1S, R12W, I.M., COMANCHE COUNTY, OK. FOUND ONE INCH PIPE WITH #4 REBAR AND PLS 1285 CAP INSIDE. USED THIS CORNER AND FILED NEW CCR.

C-16-1097, NE CORNER OF SECTION 24, T1S, R12W, I.M., COMANCHE COUNTY, OK. FOUND MAG NAIL IN PLACE PER CCR FILED BY PLS 1522. USED THIS CORNER LOCATION AND FILED NEW CCR.

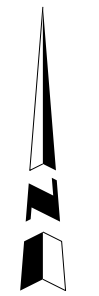
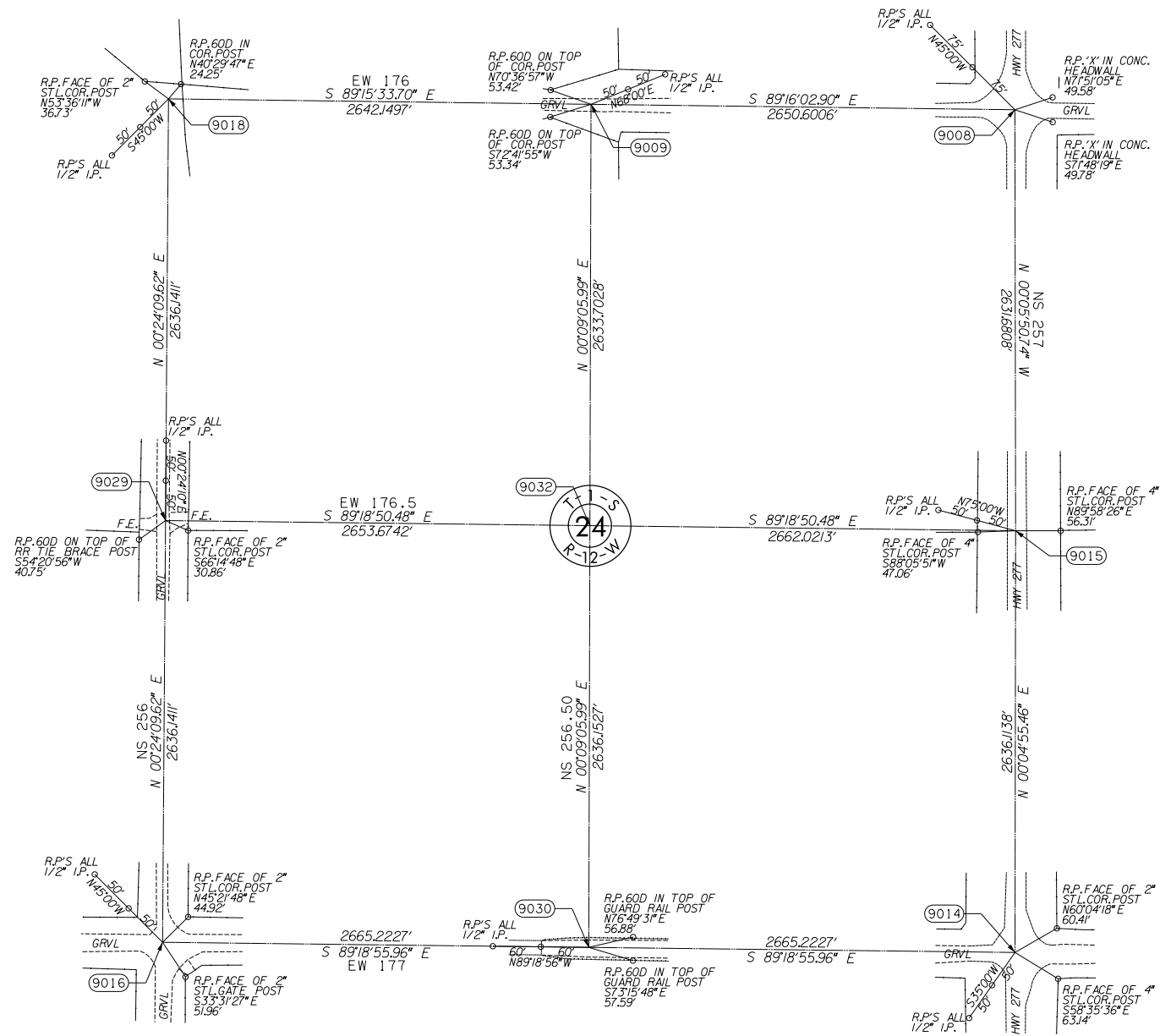
C-16-1118, W/4 CORNER OF SECTION 24, T1S, R12W, I.M., COMANCHE COUNTY, OK. SET #4 REBAR AND PLS 1071 CAP HALF WAY AND ON LINE FROM CORNERS 0.5 MILES NORTH AND SOUTH OF THIS LOCATION. FILED NEW CCR FOR THIS CORNER.

C-16-1107, E/4 CORNER OF SECTION 24, T1S, R12W, I.M., COMANCHE COUNTY, OK. FOUND PK NAIL IN PLACE BY PLS 1281. THIS CORNER WAS USED FOR LOCAL SURVEYS AND FITS THE CENTERLINE SURVEY BY PLUS OR MINUS ONE FOOT. USED THIS CORNER AND FILED NEW CCR.

C-16-1117, SW CORNER OF SECTION 24, T1S, R12W, I.M., COMANCHE COUNTY, OK. FOUND #4 REBAR IN PLACE 10 INCHES DEEP. THIS CORNER FITS MONUMENTS FOUND 1.0 MILE EAST AND NORTH AND SOUTH OF THIS LOCATION. SET #6 REBAR ON TOP OF #4 REBAR AND FILED CCR FOR THIS CORNER LOCATION.

C-16-1106, SE CORNER OF SECTION 24, T1S, R12W, I.M., COMANCHE COUNTY, OK. FOUND SQUARE BOLT IN PLACE PER CCR'S FILED BY PLS 1281 AND 1285. USED ON THIS SURVEY AND FILED NEW CCR.

C-16-1116, S/4 CORNER OF SECTION 24, T1S, R12W, I.M., COMANCHE COUNTY, OK. SET RAILROAD SPIKE HALF WAY AND ON LINE FROM CORNERS 0.5 MILES EAST AND WEST THIS LOCATION. FILED NEW CCR FOR THIS CORNER.



SCALE:
1" = 500'

OKLAHOMA DEPARTMENT OF TRANSPORTATION			
SURVEY DIVISION			
SURVEY DATA SHEET			
PLS	JLC		
DRAWN	BJG		
CHECKED	JLC		
APPROVED	JLC		
CREW	CARROLL	SWO 4752(1)	STATE JOB NO. 27968(04) SHEET NO. S010

SDS 10 OF 11